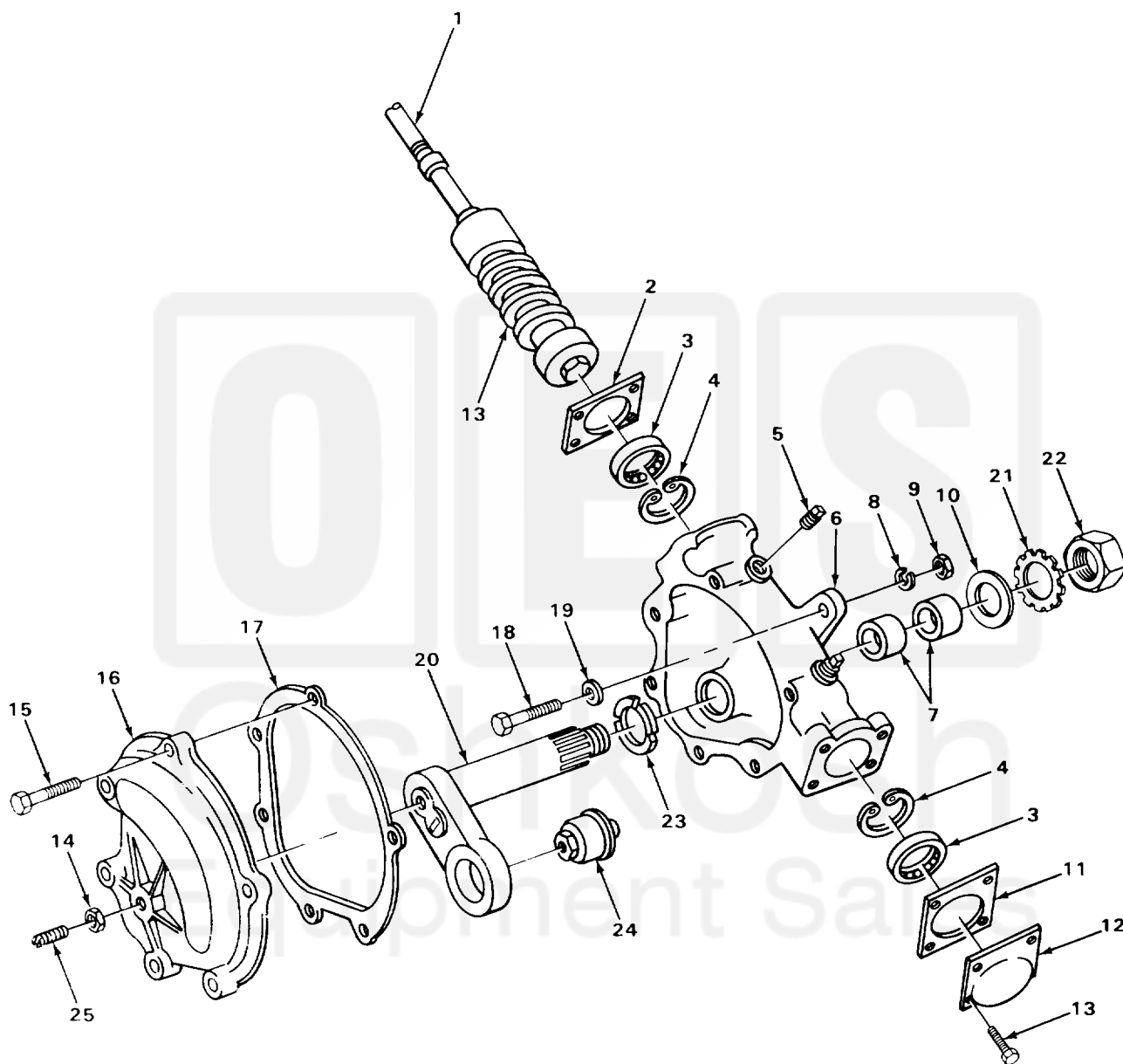


SECTION II

TM 10-3930-242-24P

6
7
20
21 THRU 25



TA705461

FIGURE 135. STEERING GEAR (LOWER SECTION).

Current part is item (12) on diagram. Available at www.oshkoshequipment.com

ITEM NO	SMR CODE	CAGEC	PART NUMBER	DESCRIPTION AND USABLE ON CODES (UOC)	QTY
GROUP 1401 MECHANICAL STEERING GEAR ASSEMBLY					
FIG. 135 STEERING GEAR (LOWER SECTION)					
1	PAFZZ	77640	HPS703324A1-5550	.CAM TUBE ASSEMBLY	1
2	PAFZZ	77640	034060	.GASKET CAM	1
3	PAFZZ	60380	B328X0H	.BEARING,ROLLER,NEED CAM	2
4	PAFZZ	77640	401219	.RING,RETAINING BEARING	2
5	PPFZZ	81348	WW-P-471AASBCC	.PLUG,PIPE HOUSING	2
6	XAFFZ	77640	HPS70206351425	.HOUSING	1
7	PAFZZ	77640	069011	..BEARING,SLEEVE HOUSING	2
8	PPFZZ	96906	MS35338-50	.WASHER,LOCK STEERING GEAR MTG	3
9	XDFZZ	77640	124944	.NUT,PLAIN,HEXAGON STEERING GEAR MTG	3
10	PAFZZ	77640	032074	.SEAL,PLAIN ENCASED LEVER SHAFT	1
11	PAFZZ	77640	034054	.GASKET END COVER	1
12	PAFZZ	77640	402211	.COVER,END,STEERING	1
13	PAFZZ	21450	425599	.SCREW,ASSEMBLED WAS END COVER	4
14	PAFZZ	70143	300157	.NUT,PLAIN,HEXAGON SIDE COVER ADJUSTMENT	1
15	PPFZZ	77640	020190	.BOLT,ASSEMBLED WASH SIDE COVER MTG	6
16	PAFZZ	77640	HPS705012	.COVER	1
17	PAFZZ	77640	HPS709004	.GASKET SIDE COVER	1
18	PPFZZ	96906	MS90727-178	.SCREW,CAP,HEXAGON H STEERING GEAR MTG	3
19	PPFZZ	96906	MS27183-22	.WASHER,FLAT STEERING GEAR MTG	3
20	PAFZZ	77640	HPS704001A1S700	.LEVERSHAFT ASSEMBLY	1
21	PPFZZ	77640	028015	..WASHER,KEY	1
22	PPFZZ	77640	025084	..NUT,PLAIN,HEXAGON LEVER SHAFT	1
23	PAFZZ	77640	062005	..RETAINER	1
24	XDFZZ	77640	044966	..BEARING UNIT,LEVER	1
25	PAFZZ	77640	021200	..SETSCREW SIDE COVER	1

END OF FIGURE

Current part is item (12) on diagram. Available at www.oshkoshequipment.com